

Homme Dam Project Master Plan Update

St. Paul District, Mississippi Valley Division
Public Scoping Meeting
December 6, 2018

Presented By

Rich Schueneman

Scott Tichy

"The views, opinions and findings contained in this report are those of the authors(s) and should not be construed as an official Department of the Army position, policy or decision, unless so designated by other official documentation."



US Army Corps
of Engineers®

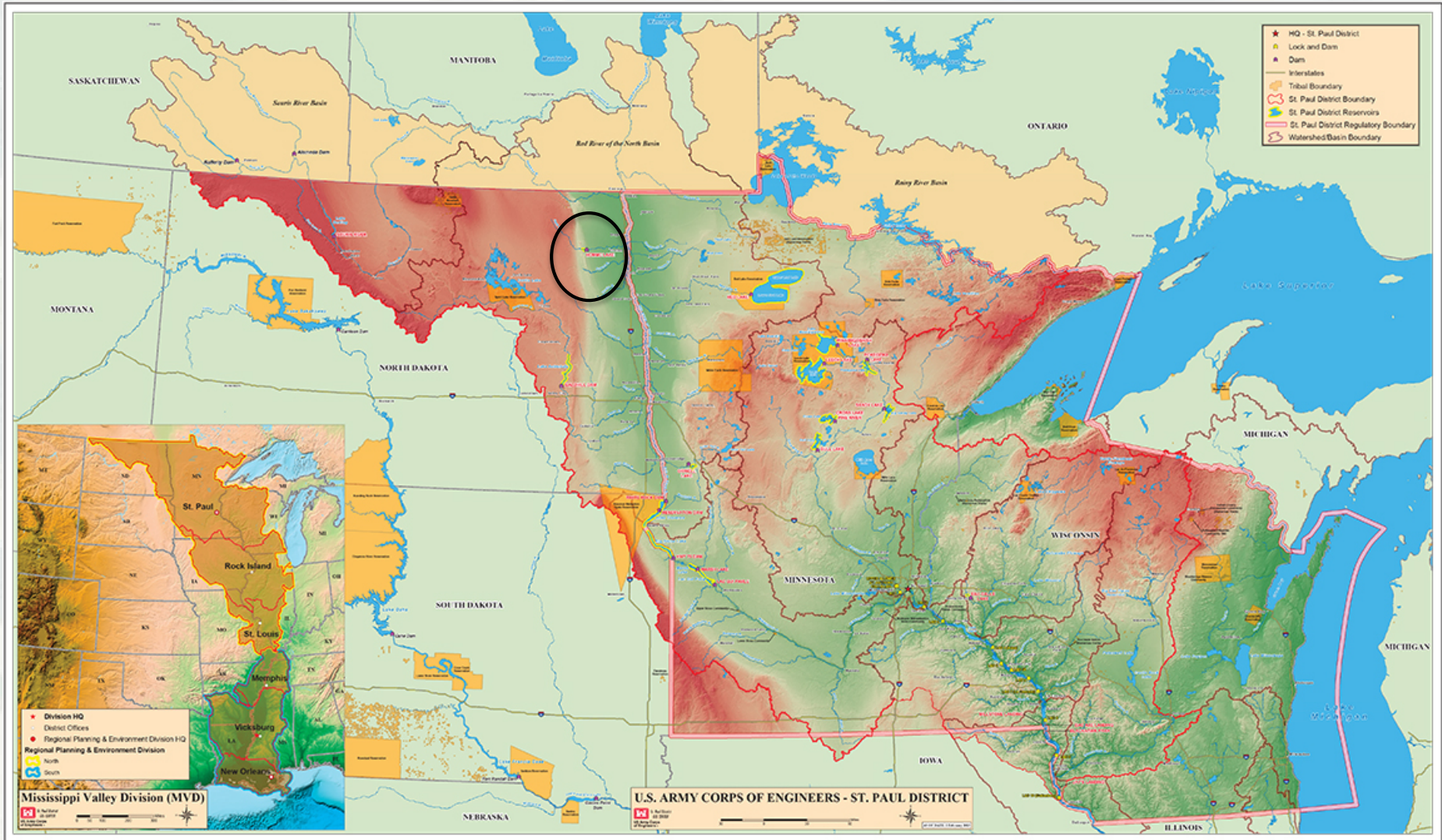


Purpose of this Meeting

- Fully describe the purpose and intent of a Master Plan
- Explain why revision is needed
- Describe the revision process
- Answer questions
- Seek your participation and input



St. Paul District



Homme Dam

- **Authorizations**

- ▶ Flood Control Act of 1944 – originally authorized for water supply
- ▶ Federal Water Project Recreation Act of 1965 – required consideration of recreation and fish and wildlife enhancement

- **Dam Construction**
1948 - 1950



Homme Dam Project



Missions

- Flood Risk Reduction
- Water Supply
- Recreation
- Environmental Stewardship

Size

- Project: 405 acres
- Normal Pool: 200 acres
- Flowage Easement: 8 acres



Lake Level Report HOMME LAKE AND DAM NORTH DAKOTA

RECREATION 2016 US Army Corps of Engineers — Value to the Nation

Natural and recreational resources at the HOMME LAKE AND DAM NORTH DAKOTA Corps lake(s) provide social, economic and environmental benefits for all Americans. Following are facts related to the Corps role managing natural and recreational resources in HOMME LAKE AND DAM NORTH DAKOTA.

SOCIAL BENEFITS

Facilities in FY 2016

- . 1 recreation areas
- . 5 picnic sites
- . 19 camping sites
- . 1 playgrounds
- . 1 swimming areas
- . 0 number of trails
- . 0 trail miles
- . 1 fishing docks
- . 1 boat ramps
- . 0 marina slips

Visits (person-trips) in FY 2016

- . 33,015 in total
- . 0 picnickers
- . 598 campers
- . 0 swimmers
- . 0 water skiers
- . 406 boaters
- . 0 sightseers
- . 0 anglers
- . 0 hunters
- . 2,190 others

Benefits in Perspective

By providing opportunities for active recreation, Corps lakes help combat one of the most significant of the nation's health problems: lack of physical activity.

Recreational programs and activities at Corps lakes also help strengthen family ties and friendships; provide opportunities for children to develop personal skills, social values, and self-esteem; and increase water safety.

Public Outreach in FY 2016

- . *Public outreach data is not available for this lake.*

ECONOMIC BENEFITS

Economic Data in FY 2016

Visitation per year resulted in:

- . \$688,322 in visitor spending within 30 miles of the Corps lake.
- . \$445,482 in sales within 30 miles of the Corps lake.
- . 7 jobs within 30 miles of the Corps lake.
- . \$149,703 in labor income within 30 miles of the Corps lake.
- . \$202,448 in value added within 30 miles of the Corps lake.
- . \$244,378 in National Economic Development Benefits.

With multiplier effects, visitor trip spending resulted in:

- . \$595,093 in total sales.
- . 8 jobs.
- . \$196,156 in labor income.
- . \$281,011 in value added (wages & salaries, payroll benefits, profits, rents, and indirect business taxes).

Benefits in Perspective

The money spent by visitors to Corps lakes on trip expenses adds to the local and national economies by supporting jobs and generating income. Visitor spending represents a sizable component of the economy in many communities around Corps lakes.

[How these numbers were calculated.](#)

ENVIRONMENTAL BENEFITS

Resources in FY 2016

- . 210 land acres
- . 197 water acres
- . 4 shoreline miles

Benefits in Perspective

Recreation experiences increase motivation to learn more about the environment; understanding and awareness of environmental issues; and sensitivity to the environment.



Source: Value to the Nation web site at www.CorpsResults.us.
Use [Fast Facts](#) to view this and other reports.

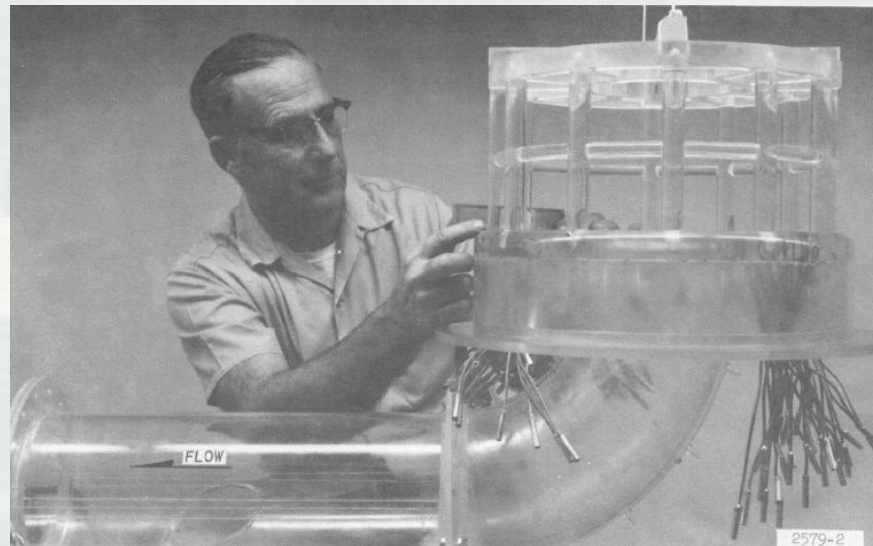
What is a Master Plan?

- ▶ Overall **land use management plan**
- ▶ Guides comprehensive **management and development** of:
 - Recreation
 - Natural Resources
 - Cultural Resources



The Master Plan does not...

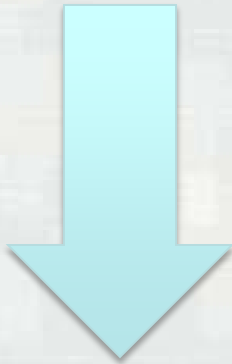
- Address the specifics plan for flood risk management or water level management. (Water Control Plan)
- Provide the details of design or daily project operations (Operational Management Plan (OMP)).



The Master Plan provides **authority**, NOT **funding**



■ Master Plan (MP)



- The “Mother” Planning Document
- Conceptual
- Reviewed every 5 years

■ Operational Management Plan (OMP)

- Detailed
- 5 –year work plan

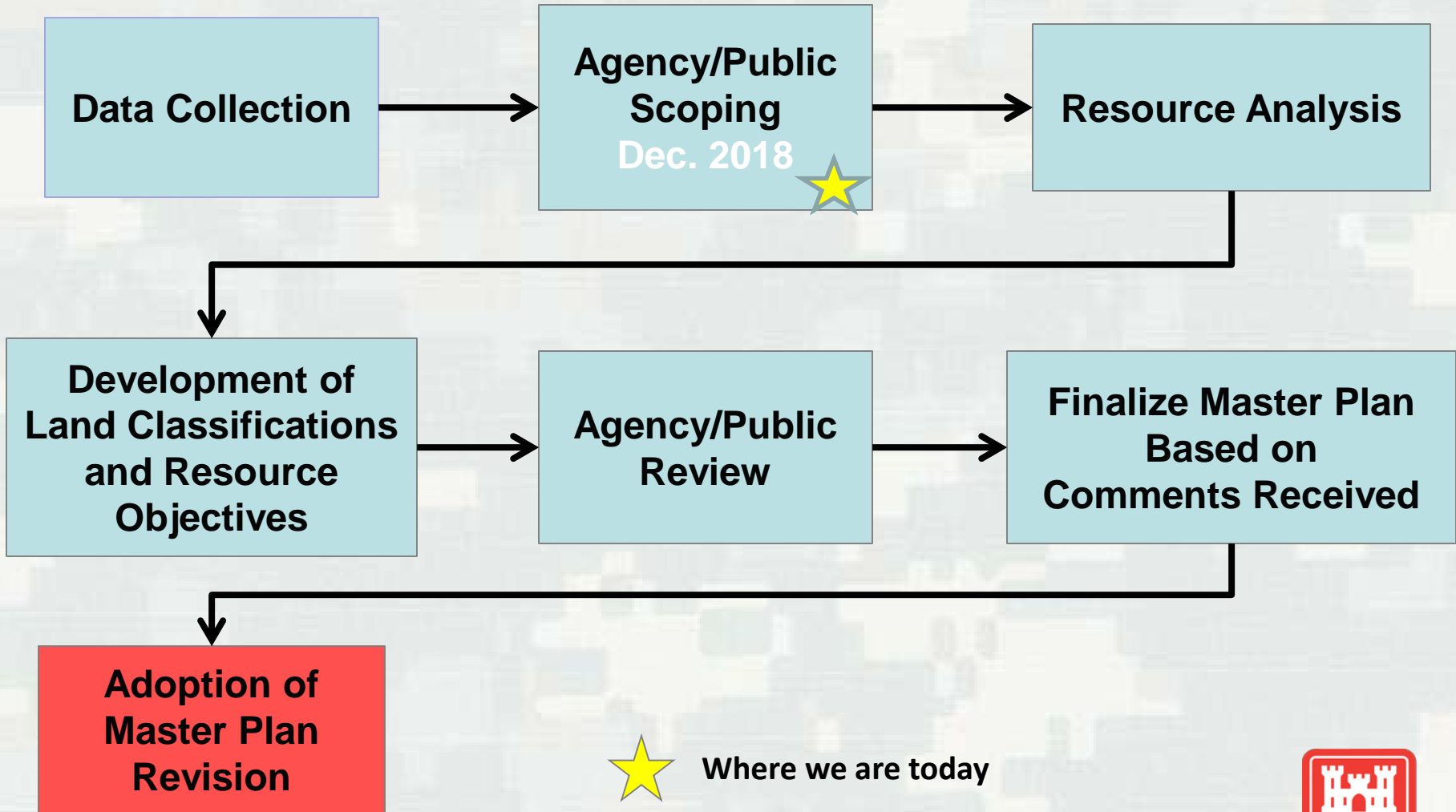


Why do we need a revision?

- Existing Master Plan was completed in 1952 with a modest revision in 1971.
- To ensure effective management practices & be responsive to existing & future needs.
- User group changes in the region.
- To better reflect current Corps policies, regulations, & processes.



The Master Plan Revision Process



What changes are needed in the current Master Plan?

- Prepare new Resource Objectives
- Review Classification of all project lands
- Update Project Maps
- Prepare new Resource Plan
- An Environmental Assessment of the Master Plan will be prepared



The Corps' vision for Homme Dam

The land, water and recreational resources of the Homme Dam Project will be managed to protect, conserve, and sustain natural and cultural resources, especially environmentally sensitive resources, and provide quality outdoor recreation opportunities that complement project resources for the benefit of present and future generations.



Need updated resource objectives

- ▶ That reflect environmental habitat and open space needs
- ▶ That reflect major recreation needs

Identified in the **North Dakota Statewide Comprehensive Outdoor Recreation Plan (SCORP)** and through **public input**.

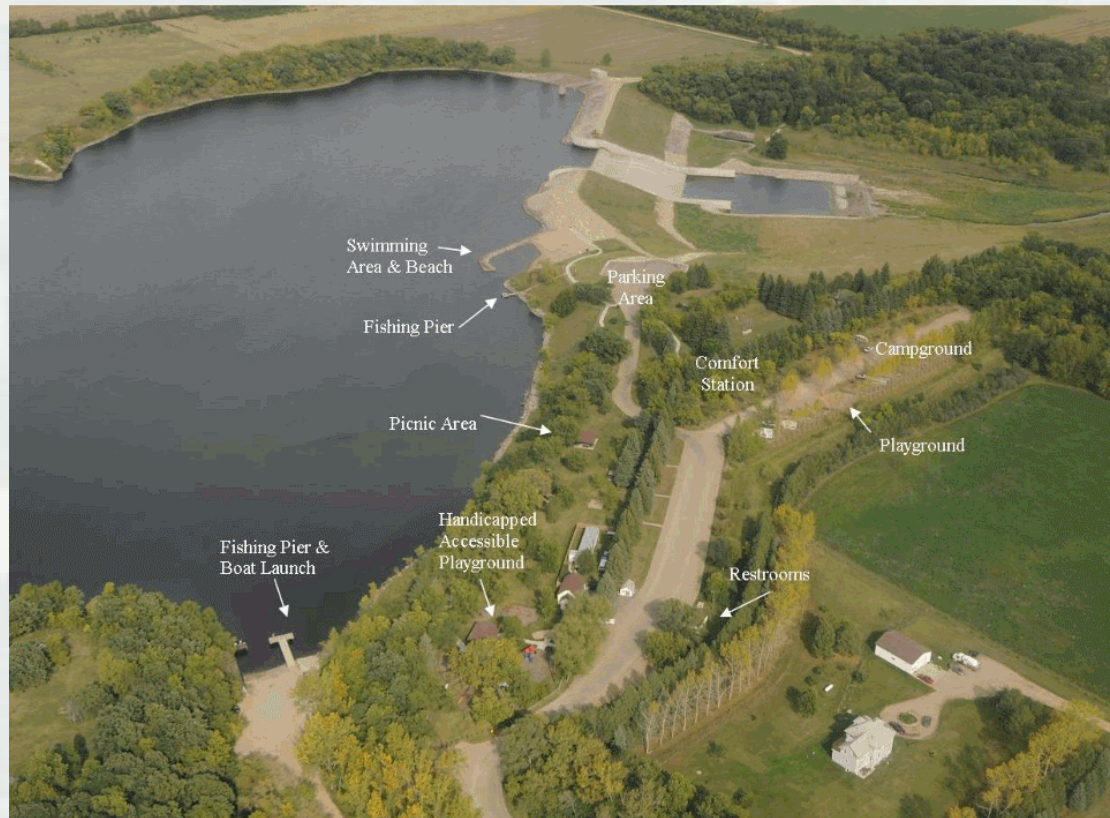


Resource Objectives

- Homme Dam is in need of updated resource objectives.



Project Land Classification



Land Classification

Project Operations:

- Lands required for the dam, spillway, storage yard, offices, maintenance facilities, and other areas that are used solely for project operations.



Land Classification

High-Density Recreation:

- Land developed for intensive recreational activities by the visiting public, including developed recreation areas and locations for concessions, resorts, marinas, etc.



Land Classification

Multiple Resource Management:

Low-Density Recreation

- Minimal development or infrastructure that support passive public recreation use (e.g. hiking, primitive camping, wildlife observation, hunting, fishing, trails, wildlife viewing, etc.).

Wildlife Management

- Fish and wildlife management activities.



Land Classification

Multiple Resource Management:

Vegetative Management

- Management activities for the protection and development of a specific vegetative cover.

Inactive and/or Future Recreation Areas

- Recreation areas planned for the future or that have been temporary closed. These lands will be classified as multiple resource management in the interim.



Land Classification

Environmentally Sensitive Areas:

- Areas where scientific, ecological, cultural or aesthetic features have been identified. These areas must be considered by management to ensure the sensitive areas are not adversely impacted.



Land Classification

Water Surface:

Restricted

- Water areas restricted for project operations, safety, and security purposes.

Designated No-Wake

- To protect environmentally sensitive shoreline areas, recreational water access areas from disturbance, and for public safety.



Land Classification

Water Surface:

Fish and Wildlife Sanctuary

- Annual or seasonal restrictions on areas to protect fish and wildlife species during periods of migration, resting, feeding, nesting, and/or spawning.

Open Recreation

- Those waters available for year round or seasonal water-based recreational use.



Projected Trends in Recreation Activities

- Outdoor Recreation Facilities Where Demand Exceeds Supply (*ND SCORP*)
- The facilities for which the highest proportion of providers say demand exceeds supply include:
 - ▶ 1. Paved multi-use trails (31%).
 - ▶ 2. Modern campgrounds (30%).
 - ▶ 3. RV/camper sites with electricity/water hookups (30%)
 - ▶ 4. Unpaved multi-use trails (27%).
 - ▶ 5. Playgrounds (27%).
 - ▶ 6. Modern general purpose parks and recreation areas (26%).
 - ▶ 7. Campgrounds with RV dump stations (23%).
 - ▶ 8. Mountain biking trails (23%).
 - ▶ 9. Off-highway vehicle (ATV, dirt bike or side by side) trails (22%).
 - ▶ 10. Group picnic shelters (22%).



Projected Trends in Recreation Activities

- **Top User Needs in the Homme Dam Region (ND SCORP)**
 - Non-Motorized Trails
 - Winter Sports Facilities
 - Recreational Boating Facilities
 - Campgrounds
 - Shooting Sport Facilities
 - Motorized Trails
 - Swimming/Water Facilities
 - Canoeing/Kayaking Facilities
 - Specialty Facilities
 - Playgrounds/PicnicAreas
 - Open Space/Parks
 - Sports Courts/Fields Golf Courses



Project Schedule



How can you help?

Please, provide your comments on how you would like to see the natural and recreational resources:

- Visit our website at:
 - ▶ https://www.mvp.usace.army.mil/Ashtabula_Homme_Master_Plans/
- Fill out a comment card now or take it home and send later
- Drop off comments at the Lake Ashtabula Project Office



Questions

Please use our remaining time to visit with staff members, ask questions and help us produce an excellent Master Plan

